



Student Success Scorecard Report 2014

Dr. Chialin Hsieh

Dean of Planning, Research, and Institutional Effectiveness

Present to The President Cabinet

September 2014

California community Colleges Student Success Task Force

Eight Areas of Focus:

1. Increase college and career readiness
2. Strengthen support for entering students
3. Incentivize successful student behaviors
4. Align course offerings to meet student needs
5. Improve education of basic skills students
6. Revitalize and re-envision professional development
7. Enable efficient statewide leadership and increase coordination among colleges
 - **7.2 Set local student success goals consistent with statewide goals**
 - **7.3 Implement a student success scorecard**
8. Align resources with student success recommendations

What is Student Success Scorecard Report?

- The Student Success Scorecard Report is an annual report produced by the California Community Colleges Chancellor's office to meet the requirements of **Assembly Bill 1417**.
- This performance measurement system includes the recommendations from the **Student Success Task Force (SSTF)**.
- The Student Success Scorecard 2013 Report provides:
 - College profile
 - Performance measurements



STUDENT SUCCESS SCORECARD

<http://scorecard.cccco.edu/scorecard.aspx>



Make a selection

Student Success Scorecard

In its commitment to increase transfer and degree and certificate attainment, the California Community Colleges Board of Governors has established a performance measurement system that tracks student success at all 112 community colleges.

This scorecard represents an unprecedented level of transparency and accountability on student progress and success metrics in public higher education in the United States. The data available in this scorecard tell how well colleges are doing in remedial instruction, job training programs, retention of students and graduation and completion rates.

With data reported by gender, age and ethnicity, colleges, students and the public can also better determine if colleges are narrowing achievement gaps, which is vitally important for our students and our state's economy.

Please contact us at scorecard@cccoco.edu if you have questions about the data or [documentation](#) used to develop the Student Success Scorecard.

Percentage of Total College Enrollment Tracked for Scorecard

2007-08 Scorecard: Student Progress and Attainment Rate (SPAR)

	SPAR Scorecard Cohort Headcount	Total Unduplicated College Headcount*	% of Total College Enrollment Represented in Scorecard Cohort
CSM	1,198	18,093	7%
Cañada	498	10,355	5%
Skyline	992	15,037	7%
State	194,050	2,772,412	7%

* Total Unduplicated College headcount is based on 3 terms: Summer 2007 + Fall 2007 + Spring 2008

http://datamart.cccco.edu/Students/Student_Term_Annual_Count.aspx

Data Mart--> Students-->Student Count--> Annual-->Annual 2007-08

The number of students identified and tracked by the Scorecard represents an extremely small proportion of total student enrollment. This table summarizes the percentage of total College enrollment tracked for the single Scorecard metric receiving the most public attention, overall Student Progress and Achievement



2014 Statewide Student Success Scorecard

The California Community Colleges is the largest system of higher education in the nation, with more than 2.4 million students attending 112 colleges. Our colleges provide students with the knowledge and background necessary to compete in today's economy. With a wide range of educational offerings, the colleges provide workforce training, basic courses in English and math, certificate and degree programs and preparation for transfer to four-year institutions.

Student Information (2012-13)

Students		2,292,252	
GENDER		RACE/ETHNICITY	
Female	53.0%	African American	7.2%
Male	45.9%	American Indian/Alaska Native	0.5%
Unknown Gender	1.1%	Asian	11.5%
AGE		Filipino	2.9%
Under 20 years old	24.1%	Hispanic	38.3%
20 to 24 years old	31.8%	Pacific Islander	0.5%
25 to 39 years old	26.7%	White	30.2%
40 or more years old	17.4%	Two or More Races	3.2%
Unknown Age	0.0%	Unknown Ethnicity	5.7%

Other Information (2012-13)

Full-Time Equivalent Students	1,107,256.9
Credit Sections	303,499
Non-Credit Sections	25,604
Median Credit Section Size	28
Percentage of Full-Time Faculty	56.9%
Student Counseling Ratio	719:1



2014 Statewide Student Success Scorecard Metrics

Cohort Tracked for Six Years Through 2012-13	Completion			Persistence			30 Units			Remedial			Career Technical Education	Career Development & College Preparation
	Prepared	Unprepared	Overall	Prepared	Unprepared	Overall	Prepared	Unprepared	Overall	Math	English	ESL		
Cohort	70.2%	40.5%	48.1%	71.9%	70.1%	70.5%	70.1%	65.3%	66.5%	30.6%	43.6%	27.1%	53.9%	8.9%
Female	73.2%	41.7%	49.2%	72.3%	70.5%	71.0%	69.9%	66.2%	67.1%	32.1%	45.7%	27.9%	57.2%	9.1%
Male	67.3%	39.2%	46.9%	71.6%	69.6%	70.1%	70.2%	64.3%	65.9%	28.7%	41.1%	26.2%	50.7%	8.7%
Under 20 years old	72.3%	42.7%	50.9%	72.3%	71.1%	71.4%	71.2%	67.0%	68.2%	33.5%	48.8%	48.9%	63.8%	16.3%
20 to 24 years old	60.1%	31.6%	37.2%	69.3%	62.2%	63.6%	63.4%	56.7%	58.0%	29.0%	36.8%	38.5%	57.9%	15.3%
25 to 39 years old	52.2%	32.2%	35.2%	68.2%	67.4%	67.5%	62.2%	59.8%	60.1%	27.9%	35.7%	20.4%	45.4%	6.2%
40 or more years old	44.3%	32.2%	33.9%	69.6%	73.7%	73.1%	53.6%	61.2%	60.1%	23.2%	29.8%	11.6%	45.9%	3.3%
African-American	65.0%	33.5%	37.5%	66.8%	64.1%	64.5%	59.7%	55.6%	56.1%	17.4%	28.9%	24.9%	47.7%	12.2%
American Indian/Alaska Native	61.3%	31.7%	37.6%	68.5%	64.1%	65.0%	68.5%	60.3%	61.9%	22.8%	34.4%	17.9%	51.4%	8.6%
Asian	80.8%	57.2%	65.7%	70.1%	76.8%	74.4%	68.4%	75.9%	73.2%	44.4%	58.9%	36.4%	60.7%	12.3%
Filipino	70.9%	44.1%	51.1%	73.8%	71.9%	72.4%	71.2%	68.6%	69.2%	35.5%	51.6%	30.1%	63.9%	NA
Hispanic	63.5%	34.7%	39.1%	71.2%	69.0%	69.3%	67.6%	62.4%	63.2%	28.5%	40.0%	16.9%	52.3%	6.5%
Pacific Islander	64.1%	37.2%	42.7%	70.6%	68.1%	68.6%	66.0%	61.3%	62.3%	26.7%	40.0%	28.7%	54.9%	20.2%
White	69.8%	43.6%	52.5%	73.1%	70.9%	71.7%	72.2%	67.3%	69.0%	34.9%	47.9%	31.1%	53.7%	12.4%



2014 Cañada College Student Success Scorecard

Cañada College, established in 1968, is part of the three-school San Mateo County Community College District. The college is one of the smallest community colleges in the Bay Area - enabling it to meet its mission of ensuring that students from diverse backgrounds achieve their educational goals by providing quality instruction in transfer and general education classes, professional and technical programs, and basic skills.

Student Information (2012-13)			
Students			10,268
GENDER		RACE/ETHNICITY	
Female	62.1%	African American	3.8%
Male	36.2%	American Indian/Alaska Native	0.2%
Unknown Gender	1.7%	Asian	9.2%
AGE		Filipino	3.5%
Under 20 years old	21.6%	Hispanic	42.8%
20 to 24 years old	28.1%	Pacific Islander	1.7%
25 to 39 years old	30.5%	White	31.0%
40 or more years old	19.9%	Two or More Races	3.2%
Unknown Age	0.0%	Unknown Ethnicity	4.6%

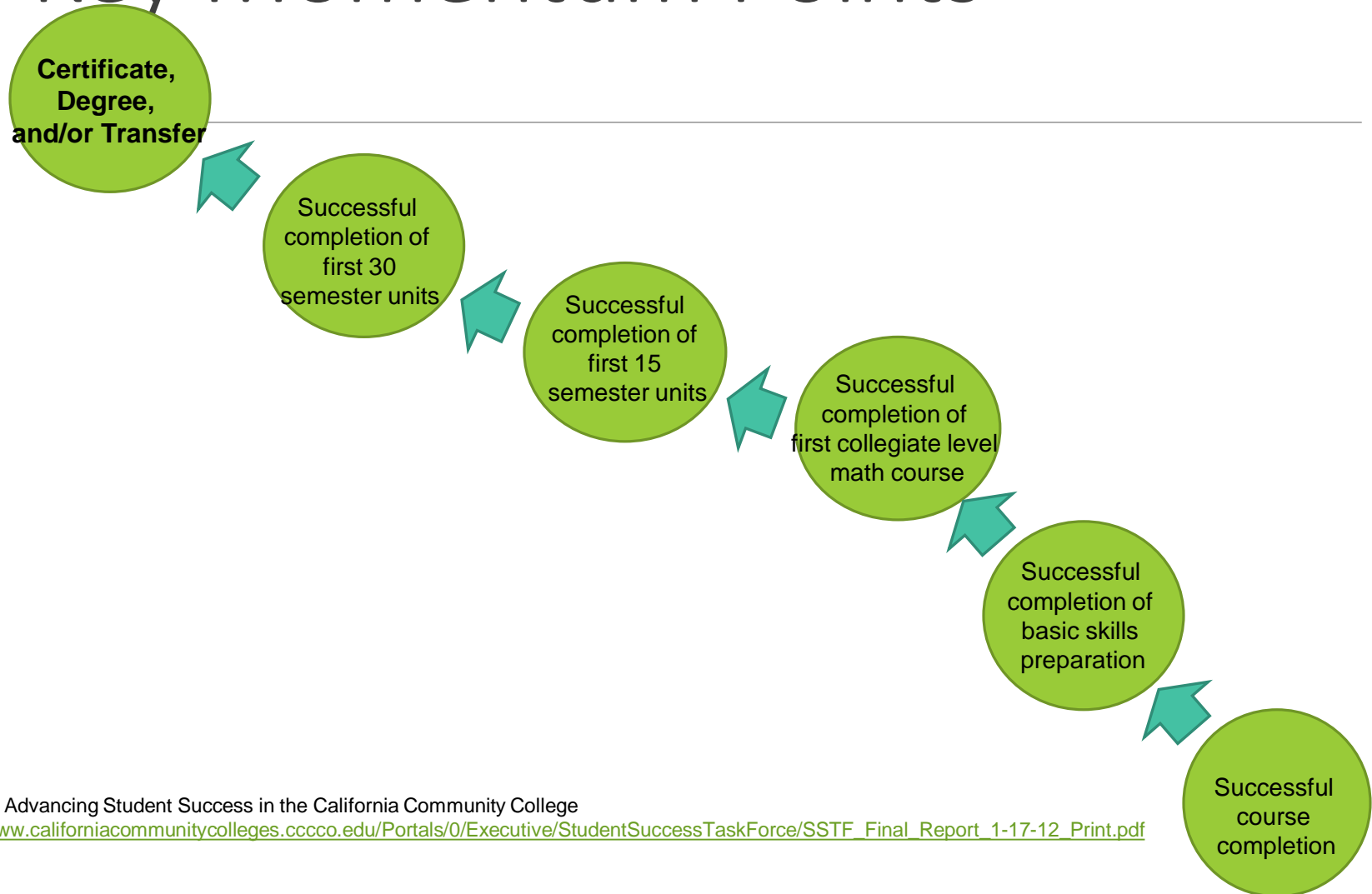
Other Information (2012-13)	
Full-Time Equivalent Students	4,276.4
Credit Sections	1,449
Non-Credit Sections	3
Median Credit Section Size	25
Percentage of Full-Time Faculty	70.5%
Student Counseling Ratio	564:1



2014 Cañada College Student Success Scorecard Metrics

Cohort Tracked for Six Years Through 2012-13	Completion			Persistence			30 Units			Remedial			Career Technical Education
	Prepared	Unprepared	Overall	Prepared	Unprepared	Overall	Prepared	Unprepared	Overall	Math	English	ESL	
Cohort	76.2%	37.9%	49.2%	69.4%	74.1%	72.7%	58.5%	65.0%	63.1%	31.7%	45.9%	11.4%	53.7%
Female	73.8%	36.9%	46.4%	73.8%	72.7%	73.0%	66.2%	61.5%	62.7%	28.8%	46.7%	11.6%	53.5%
Male	78.4%	37.8%	50.9%	64.9%	76.9%	73.0%	51.4%	67.9%	62.6%	35.6%	46.0%	11.0%	56.9%
Under 20 years old	78.5%	39.1%	51.9%	68.9%	74.6%	72.7%	58.5%	65.6%	63.3%	34.8%	53.8%	26.3%	56.1%
20 to 24 years old	57.1%	27.3%	32.5%	71.4%	66.7%	67.5%	71.4%	60.6%	62.5%	30.4%	36.3%	17.8%	59.5%
25 to 39 years old	0.0%	33.3%	32.1%	100.0%	70.4%	71.4%	0.0%	63.0%	60.7%	29.5%	33.8%	10.4%	54.3%
40 or more years old	50.0%	50.0%	50.0%	75.0%	91.7%	87.5%	50.0%	66.7%	62.5%	22.5%	23.1%	5.2%	46.5%
African-American	0.0%	18.2%	16.7%	0.0%	63.6%	58.3%	0.0%	45.5%	41.7%	28.9%	20.5%	NA	46.4%
American Indian/Alaska Native	NA	50.0%	50.0%	NA	100.0%	100.0%	NA	100.0%	100.0%	33.3%	100.0%	NA	66.7%
Asian	85.7%	57.9%	72.5%	52.4%	94.7%	72.5%	47.6%	84.2%	65.0%	77.8%	71.4%	14.3%	43.2%
Filipino	66.7%	22.2%	33.3%	66.7%	77.8%	75.0%	66.7%	66.7%	66.7%	21.4%	50.0%	0.0%	63.0%
Hispanic	68.8%	30.2%	34.5%	87.5%	73.6%	75.2%	68.8%	62.0%	62.8%	23.5%	45.0%	10.0%	61.2%
Pacific Islander	0.0%	46.2%	42.9%	0.0%	61.5%	57.1%	0.0%	46.2%	42.9%	15.4%	36.8%	0.0%	46.2%
White	75.0%	42.6%	55.0%	73.8%	76.7%	75.6%	62.5%	66.7%	65.1%	39.6%	48.5%	25.0%	53.4%

Key Momentum Points



Source: Advancing Student Success in the California Community College

http://www.californiacommunitycolleges.cccco.edu/Portals/0/Executive/StudentSuccessTaskForce/SSTF_Final_Report_1-17-12_Print.pdf

Scorecard Metrics

1. Momentum Points

- Remedial
 - English, Math & ESL
- Persistence Rate
- Achieved at least 30 Units Rate

2. Completion Outcomes

- Degree/Transfer
- Career Technical Education (CTE)

MOMENTUM POINTS

COMPLETION OUTCOMES

PROFILE

REMEDIAL

PERSISTENCE

30 UNITS

DEGREE/TRANSFER

CAREER TECHNICAL EDUCATION

College Profile

[Click here to view current year report](#)

The student population and course sections offered described in the tables are based on the 2012-13 academic year. Students represented differ from those included for calculation of Scorecard metrics, which are based on first-time students enrolled in 2007-08.

STUDENT INFORMATION			
Students	2,292,252		10,268
GENDER		ETHNICITY/RACE	
Female	53%	62.1%	African American 7.2% 3.8%
Male	46%	36.2%	American Indian/Alaska Native 0.2%
Unknown		1.7%	Asian 11.5% 9.2%
AGE		Filipino	3.5%
Less than 20 years old	24%	21.6%	Hispanic 38.3% 42.8%
20 to 24 years old	31%	28.1%	Pacific Islander 1.7%
25 to 39 years old	27%	30.5%	White 30.2% 31.0%
40 or more years old	17%	19.9%	Two or more Races 3.2%
Unknown		0.0%	Unknown 4.6%

OTHER INFORMATION	
Full Time Equivalent Students	4,276.4
Credit Sections	1,449
Non-Credit Sections	3
Median Credit Section Size	25 28
Percentage of Full-Time Faculty	70.5% 56.9%
Student Counseling Ratio	564:1 719:1

Cañada College, established in 1968, is part of the three-school San Mateo County Community College District. The college is one of the smallest community colleges in the Bay Area - enabling it to meet its mission of ensuring that students from diverse backgrounds achieve their educational goals by providing quality instruction in transfer and general education classes, professional and technical programs, and basic skills.



District: San Mateo
 Students: 10,268
 County: San Mateo

Purple=state number

MOMENTUM POINTS

COMPLETION OUTCOMES

- PROFILE
- REMEDIAL
- PERSISTENCE
- 30 UNITS
- DEGREE/TRANSFER
- CAREER TECHNICAL EDUCATION

Remedial

[Click here to view trend data](#)

Percentage of credit students tracked for six years through 2012-13 who started first time in 2007-08 below transfer level in English, mathematics, and/or ESL and completed a college-level course in the same discipline.

MATH		ENGLISH		ESL	
30.6%		43.6%		27.1%	
31.7%		45.9%		11.4%	
Gender	%	Gender	%	Gender	%
FEMALE	28.8	FEMALE	46.7	FEMALE	11.6
MALE	35.6	MALE	46.0	MALE	11.0
Age	%	Age	%	Age	%
UNDER 20	34.8	UNDER 20	53.8	UNDER 20	26.3
20-24	30.4	20-24	36.3	20-24	17.8
25-39	29.5	25-39	33.8	25-39	10.4
40 OR OVER	22.5	40 OR OVER	23.1	40 OR OVER	5.2
Ethnicity/Race	%	Ethnicity/Race	%	Ethnicity/Race	%
AFRICAN AMERICAN	28.9	AFRICAN AMERICAN	20.5	AFRICAN AMERICAN	N/A
AMERICAN INDIAN/ ALASKA NATIVE	33.3*	AMERICAN INDIAN/ ALASKA NATIVE	100.0*	AMERICAN INDIAN/ ALASKA NATIVE	N/A
ASIAN	77.8	ASIAN	71.4	ASIAN	14.3
FILIPINO	21.4	FILIPINO	50.0*	FILIPINO	0.0*
HISPANIC	23.5	HISPANIC	45.0	HISPANIC	10.0
PACIFIC ISLANDER	15.4	PACIFIC ISLANDER	36.8	PACIFIC ISLANDER	0.0*
WHITE	39.6	WHITE	48.5	WHITE	25.0

0%: Cohort with no students attaining an outcome

N/A: Cohort has no students

*: Cohort fewer than 10 students

MOMENTUM POINTS

COMPLETION OUTCOMES

PROFILE

REMEDIAL

PERSISTENCE

30 UNITS

DEGREE/TRANSFER

CAREER TECHNICAL EDUCATION

Persistence

[Click here to view trend data](#)

Percentage of degree, certificate and/or transfer-seeking students starting first time in 2007-08 tracked for six years through 2012-13 who enrolled in the first three consecutive terms.

71.9%

70.1%

70.5%

COLLEGE PREPARED		UNPREPARED FOR COLLEGE		OVERALL	
69.4%		74.1%		72.7%	
Gender	%	Gender	%	Gender	%
FEMALE	73.8	FEMALE	72.7	FEMALE	73.0
MALE	64.9	MALE	76.9	MALE	73.0
Age	%	Age	%	Age	%
UNDER 20	68.9	UNDER 20	74.6	UNDER 20	72.7
20-24	71.4*	20-24	66.7	20-24	67.5
25-39	100.0*	25-39	70.4	25-39	71.4
40 OR OVER	75.0*	40 OR OVER	91.7	40 OR OVER	87.5
Ethnicity/Race	%	Ethnicity/Race	%	Ethnicity/Race	%
AFRICAN AMERICAN	0.0*	AFRICAN AMERICAN	63.6	AFRICAN AMERICAN	58.3
AMERICAN INDIAN/ ALASKA NATIVE	N/A	AMERICAN INDIAN/ ALASKA NATIVE	100.0*	AMERICAN INDIAN/ ALASKA NATIVE	100.0*
ASIAN	52.4	ASIAN	94.7	ASIAN	72.5
FILIPINO	66.7*	FILIPINO	77.8*	FILIPINO	75.0
HISPANIC	87.5	HISPANIC	73.6	HISPANIC	75.2
PACIFIC ISLANDER	0.0*	PACIFIC ISLANDER	61.5	PACIFIC ISLANDER	57.1
WHITE	73.8	WHITE	76.7	WHITE	75.6

0%: Cohort with no students attaining an outcome

N/A: Cohort has no students

*: Cohort fewer than 10 students

COLLEGE PREPARED: Student's lowest course attempted in Math and/or English was college level

UNPREPARED FOR COLLEGE: Student's lowest course attempted in Math and/or English was remedial level

OVERALL: Student attempted any level of Math or English in the first three years

30 Units

[Click here to view trend data](#)

Percentage of degree, certificate and/or transfer-seeking students starting first time in 2007-08 tracked for six years through 2012-13 who achieved at least 30 units.

70.1%

65.3%

66.5%

COLLEGE PREPARED		UNPREPARED FOR COLLEGE		OVERALL	
58.5%		65.0%		63.1%	
Gender	%	Gender	%	Gender	%
FEMALE	66.2	FEMALE	61.5	FEMALE	62.7
MALE	51.4	MALE	67.9	MALE	62.6
Age	%	Age	%	Age	%
UNDER 20	58.5	UNDER 20	65.6	UNDER 20	63.3
20-24	71.4*	20-24	60.6	20-24	62.5
25-39	0.0*	25-39	63.0	25-39	60.7
40 OR OVER	50.0*	40 OR OVER	66.7	40 OR OVER	62.5
Ethnicity/Race	%	Ethnicity/Race	%	Ethnicity/Race	%
AFRICAN AMERICAN	0.0*	AFRICAN AMERICAN	45.5	AFRICAN AMERICAN	41.7
AMERICAN INDIAN/ ALASKA NATIVE	N/A	AMERICAN INDIAN/ ALASKA NATIVE	100.0*	AMERICAN INDIAN/ ALASKA NATIVE	100.0*
ASIAN	47.6	ASIAN	84.2	ASIAN	65.0
FILIPINO	66.7*	FILIPINO	66.7*	FILIPINO	66.7
HISPANIC	68.8	HISPANIC	62.0	HISPANIC	62.8
PACIFIC ISLANDER	0.0*	PACIFIC ISLANDER	46.2	PACIFIC ISLANDER	42.9
WHITE	62.5	WHITE	66.7	WHITE	65.1

0%: Cohort with no students attaining an outcome

N/A: Cohort has no students

*: Cohort fewer than 10 students

COLLEGE PREPARED: Student's lowest course attempted in Math and/or English was college level

UNPREPARED FOR COLLEGE: Student's lowest course attempted in Math and/or English was remedial level

OVERALL: Student attempted any level of Math or English in the first three years

MOMENTUM POINTS

COMPLETION OUTCOMES

PROFILE

REMEDIAL

PERSISTENCE

30 UNITS

DEGREE/TRANSFER

CAREER TECHNICAL EDUCATION

Completion

[Click here to view trend data](#)

Percentage of degree, certificate and/or transfer-seeking students starting first time in 2007-08 tracked for six years through 2012-13 who completed a degree, certificate or transfer-related outcomes

70.2%

40.5%

48.1%

COLLEGE PREPARED		UNPREPARED FOR COLLEGE		OVERALL	
76.2%		37.9%		49.2%	
Gender	%	Gender	%	Gender	%
FEMALE	73.8	FEMALE	36.9	FEMALE	46.4
MALE	78.4	MALE	37.8	MALE	50.9
Age	%	Age	%	Age	%
UNDER 20	78.5	UNDER 20	39.1	UNDER 20	51.9
20-24	57.1*	20-24	27.3	20-24	32.5
25-39	0.0*	25-39	33.3	25-39	32.1
40 OR OVER	50.0*	40 OR OVER	50.0	40 OR OVER	50.0
Ethnicity/Race	%	Ethnicity/Race	%	Ethnicity/Race	%
AFRICAN AMERICAN	0.0*	AFRICAN AMERICAN	18.2	AFRICAN AMERICAN	16.7
AMERICAN INDIAN/ ALASKA NATIVE	N/A	AMERICAN INDIAN/ ALASKA NATIVE	50.0*	AMERICAN INDIAN/ ALASKA NATIVE	50.0*
ASIAN	85.7	ASIAN	57.9	ASIAN	72.5
FILIPINO	66.7*	FILIPINO	22.2*	FILIPINO	33.3
HISPANIC	68.8	HISPANIC	30.2	HISPANIC	34.5
PACIFIC ISLANDER	0.0*	PACIFIC ISLANDER	46.2	PACIFIC ISLANDER	42.9
WHITE	75.0	WHITE	42.6	WHITE	55.0

0%: Cohort with no students attaining an outcome

N/A: Cohort has no students

*: Cohort fewer than 10 students

COLLEGE PREPARED: Student's lowest course attempted in Math and/or English was college level

UNPREPARED FOR COLLEGE: Student's lowest course attempted in Math and/or English was remedial level

OVERALL: Student attempted any level of Math or English in the first three years

MOMENTUM POINTS

COMPLETION OUTCOMES

PROFILE

REMEDIAL

PERSISTENCE

30 UNITS

DEGREE/TRANSFER

CAREER TECHNICAL EDUCATION

Career Technical Education

[Click here to view trend data](#)

Percentage of students tracked for six years through 2012-13 who started first time in 2007-08 and completed more than eight units in courses classified as career technical education (or vocational) in a single discipline and completed a degree, certificate or transferred.

53.9%

OVERALL

53.7%

Gender	%
FEMALE	53.5
MALE	56.9
Age	%
UNDER 20	56.1
20-24	59.5
25-39	54.3
40 OR OVER	46.5
Ethnicity/Race	%
AFRICAN AMERICAN	46.4
AMERICAN INDIAN/ ALASKA NATIVE	66.7*
ASIAN	43.2
FILIPINO	63.0
HISPANIC	61.2
PACIFIC ISLANDER	46.2
WHITE	53.4

0%: Cohort with no students attaining an outcome

N/A: Cohort has no students

*: Cohort fewer than 10 students

San Mateo Community College Districts (SMCCCD)

Cañada College

College of San Mateo

Skyline College

Metrics

1. Momentum Points

- Remedial
 - English, Math & ESL
- Persistence Rate
- Achieved at least 30 Units Rate

2. Completion Outcomes

- Degree/Transfer
- Career Technical Education (CTE)

Percentage of Total College Enrollment Tracked for Scorecard

2007-08 Scorecard: Student Progress and Attainment Rate (SPAR)

	SPAR Scorecard Cohort Headcount	Total Unduplicated College Headcount*	% of Total College Enrollment Represented in Scorecard Cohort
CSM	1,198	18,093	7%
Cañada	498	10,355	5%
Skyline	992	15,037	7%
State	194,050	2,772,412	7%

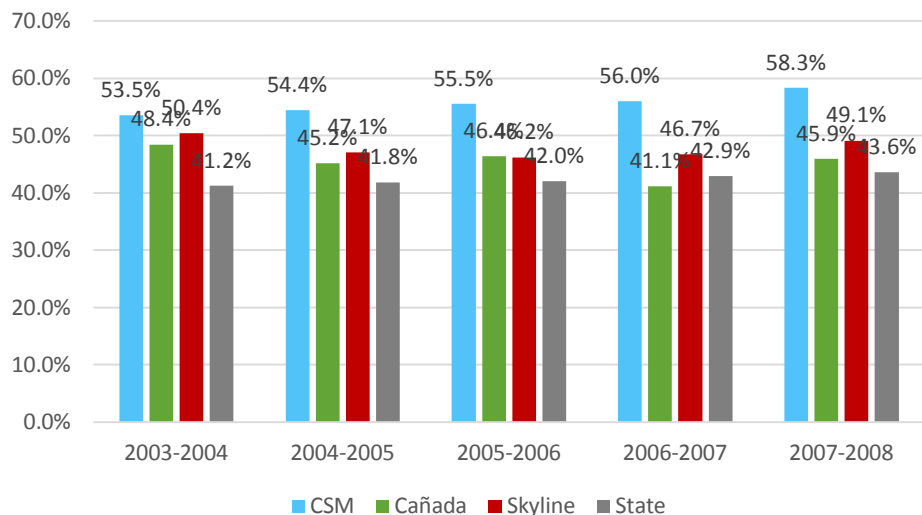
*Total Unduplicated College headcount is based on 3 terms: Summer 2007 + Fall 2007 + Spring 2008

http://datamart.cccco.edu/Students/Student_Term_Annual_Count.aspx

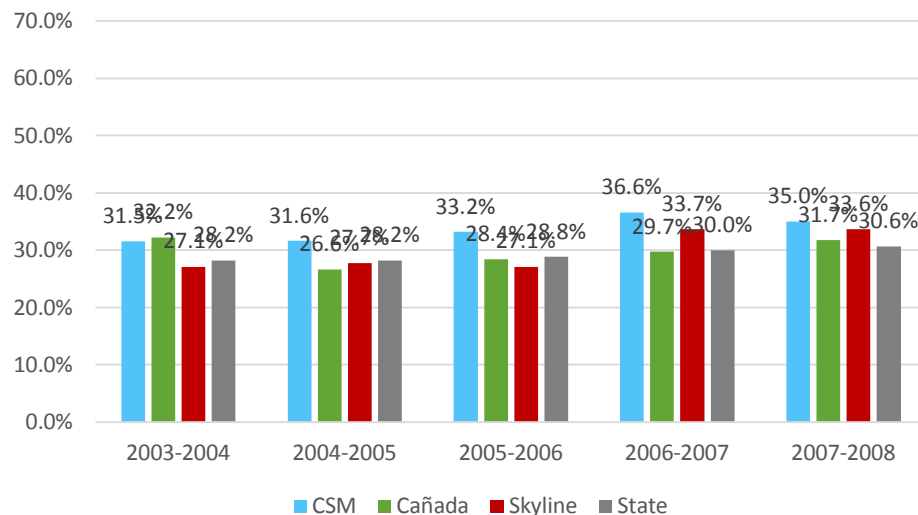
Data Mart--> Students-->Student Count--> Annual-->Annual 2007-08

The number of students identified and tracked by the Scorecard represents an extremely small proportion of total student enrollment. This table summarizes the percentage of total College enrollment tracked for the single Scorecard metric receiving the most public attention, overall Student Progress and Achievement

Remedial Progress English



Remedial Progress Math



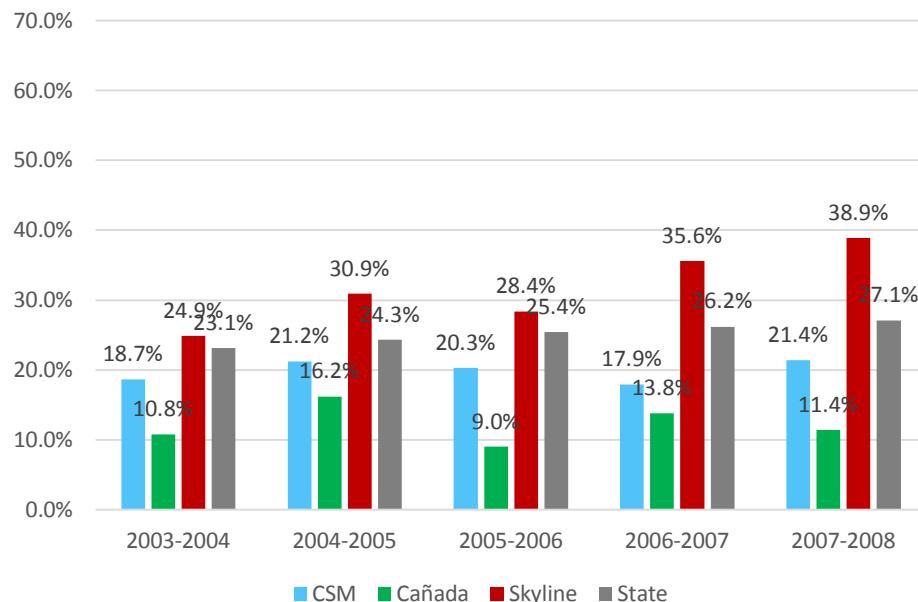
REMEDIAL PROGRESS RATE (MATH, ENGLISH, ESL)

Definition: The percentage of credit students who attempted a course designated at “levels below transfer” in:

- Math and successfully completed a college-level course in Math within six years.
- English and successfully completed a college-level course in English within six years.
- ESL and successfully completed the ESL sequence or a college-level English course within six years.

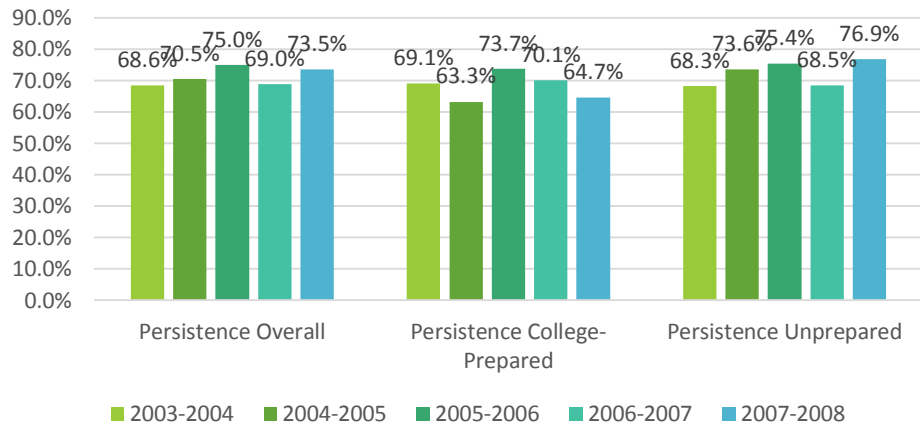
The cohort is defined as the year the student attempts a course at “levels below transfer” in Math, English and/or ESL at that college.

Remedial Progress ESL

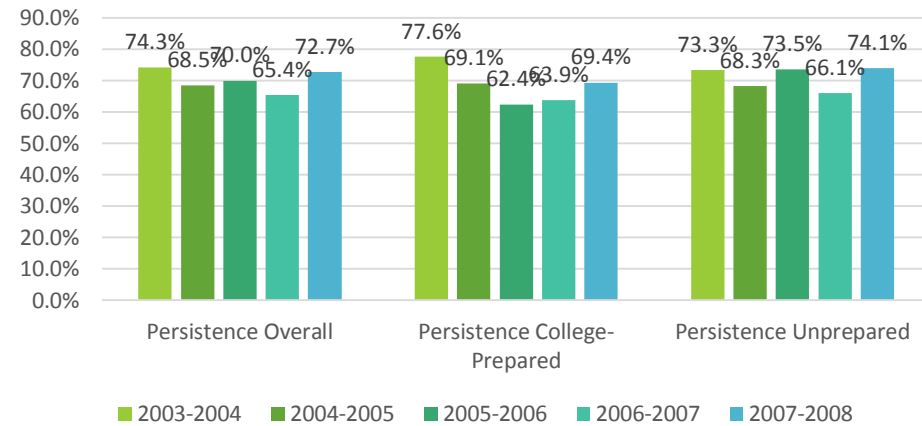




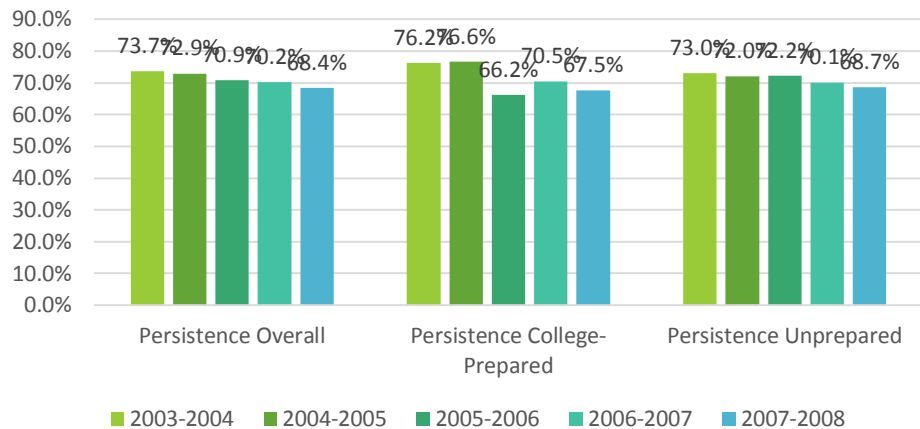
CSM Persistence



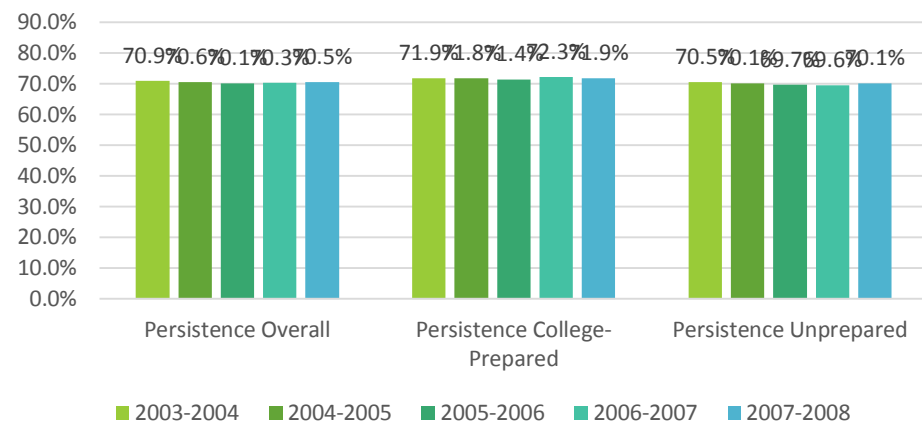
Cañada Persistence



Skyline Persistence



State Persistence



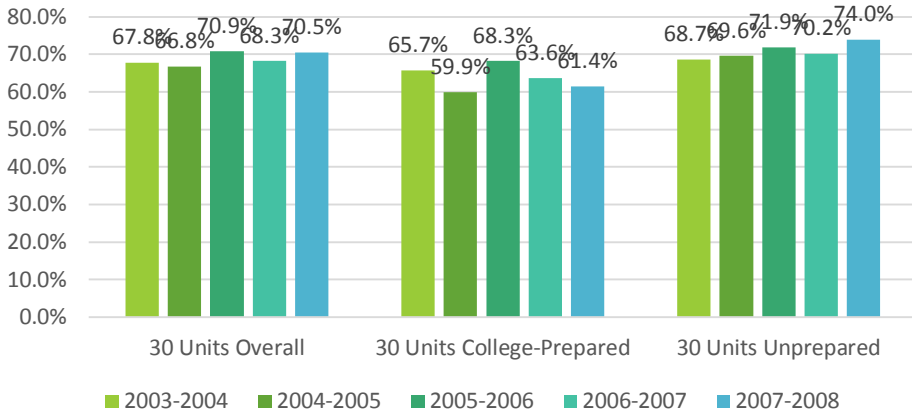
PERSISTENCE RATE

Definition: The percentage of first-time students with minimum of 6 units earned who attempted any Math or English in the first three years and achieved the following measure of progress (or momentum point) within six years of entry:

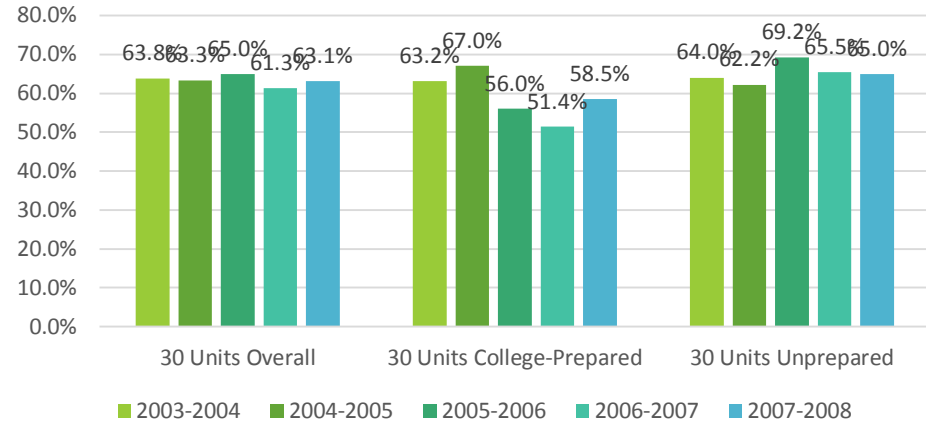
- Enroll in first three consecutive primary semester terms (or four quarter terms) anywhere in the CCC System.

Persistence Rate is reported for the overall cohort, as well as by lowest level of attempted Math or English.

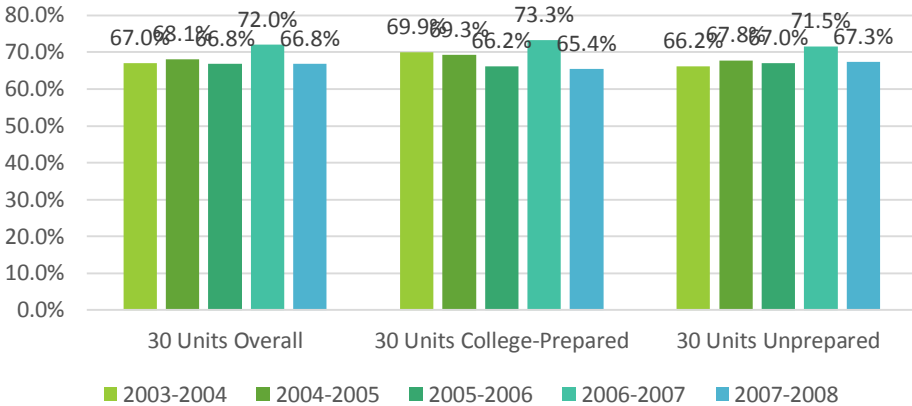
CSM 30 Units



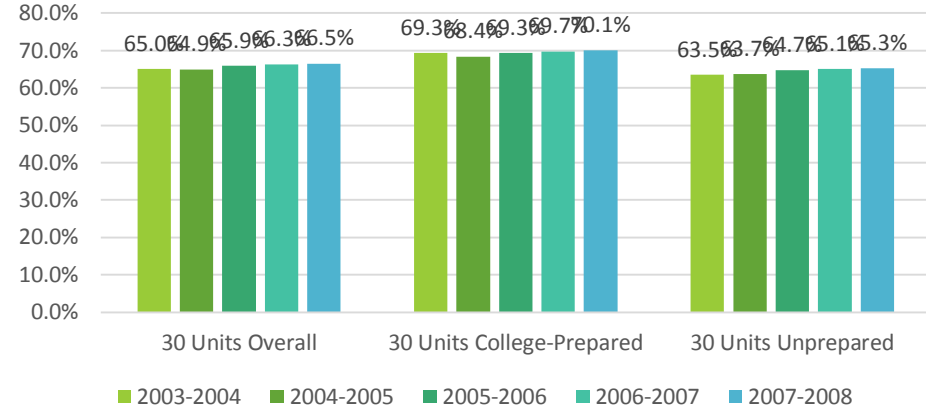
Cañada 30 Units



Skyline 30 Units



State 30 Units



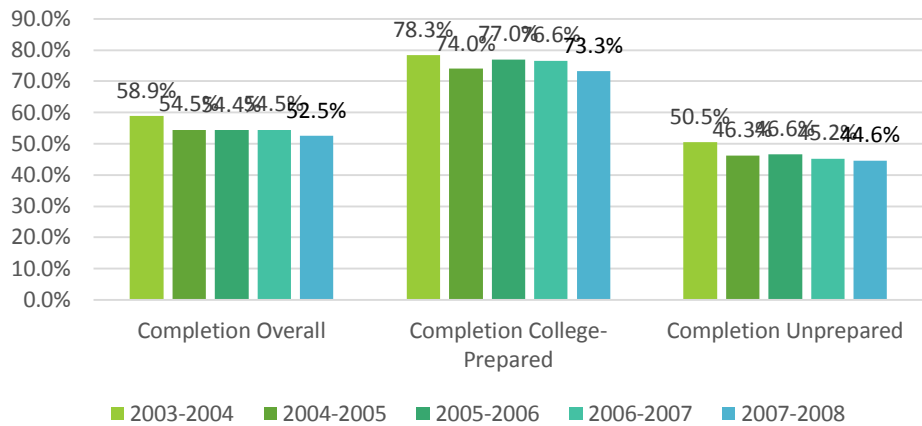
30 UNITS RATE

Definition: The percentage of first-time students with minimum of 6 units earned who attempted any Math or English in the first three years and achieved the following measure of progress (or milestone) within six years of entry:

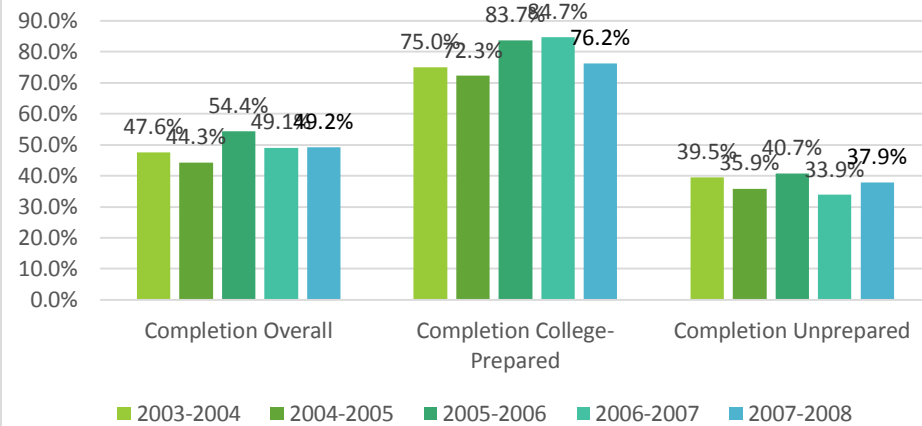
- Earned at least 30 units in the CCC system.

At Least 30 Units Rate is reported for the overall cohort, as well as by lowest level of attempted Math or English.

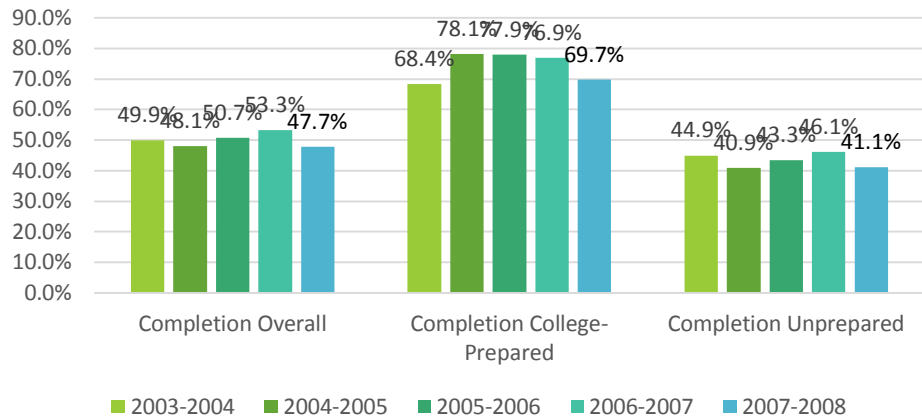
CSM Completion



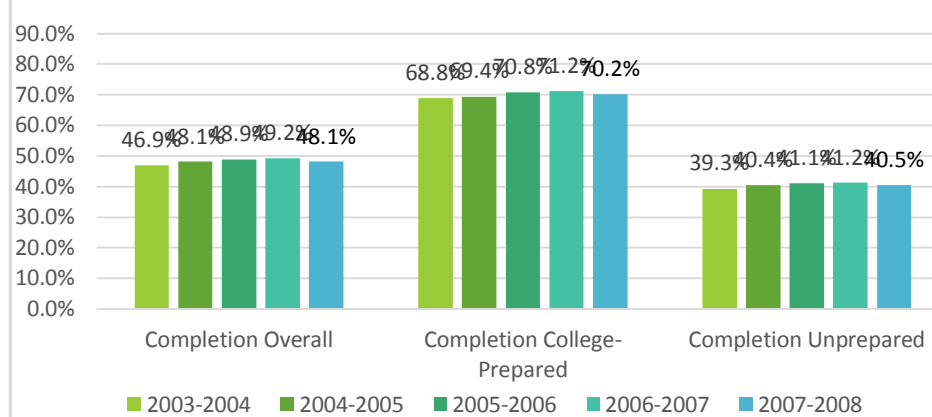
Cañada Completion



Skyline Completion



State Completion



COMPLETION RATE (Formerly: STUDENT PROGRESS AND ATTAINMENT RATE/SPAR)

Definition: The percentage of first-time students with minimum of 6 units earned who attempted any Math or English in the first three years and achieved any of the following outcomes within six years of entry:

- Earned AA/AS or credit Certificate (Chancellor’s Office approved); CS not counted.
- Transfer to four-year institution (students shown to have enrolled at any four-year institution of higher education after enrolling at a CCC)
- Achieved “Transfer Prepared” (student successfully completed 60 UC/CSU transferable units with a GPA >= 2.0)

SPAR is reported for the overall cohort, as well as by lowest level of attempted Math or English.

CAREER TECHNICAL EDUCATION COMPLETION RATE (CTE)

Definition: The percentage of students who completed a CTE course for the first-time and completed more than 8 units in the subsequent three years in a single discipline (2-digit vocational TOP code where at least one of the courses is occupational SAM B or C) and who achieved any of the following outcomes within six years of entry:

- Earned any AA/AS or credit Certificate (Chancellor’s Office approved)
- Transfer to four-year institution (students shown to have enrolled at any four-year institution of higher education after enrolling at a CCC)
- Achieved “Transfer Prepared” (student successfully completed 60 UC/CSU transferable units with a GPA \geq 2.0)

