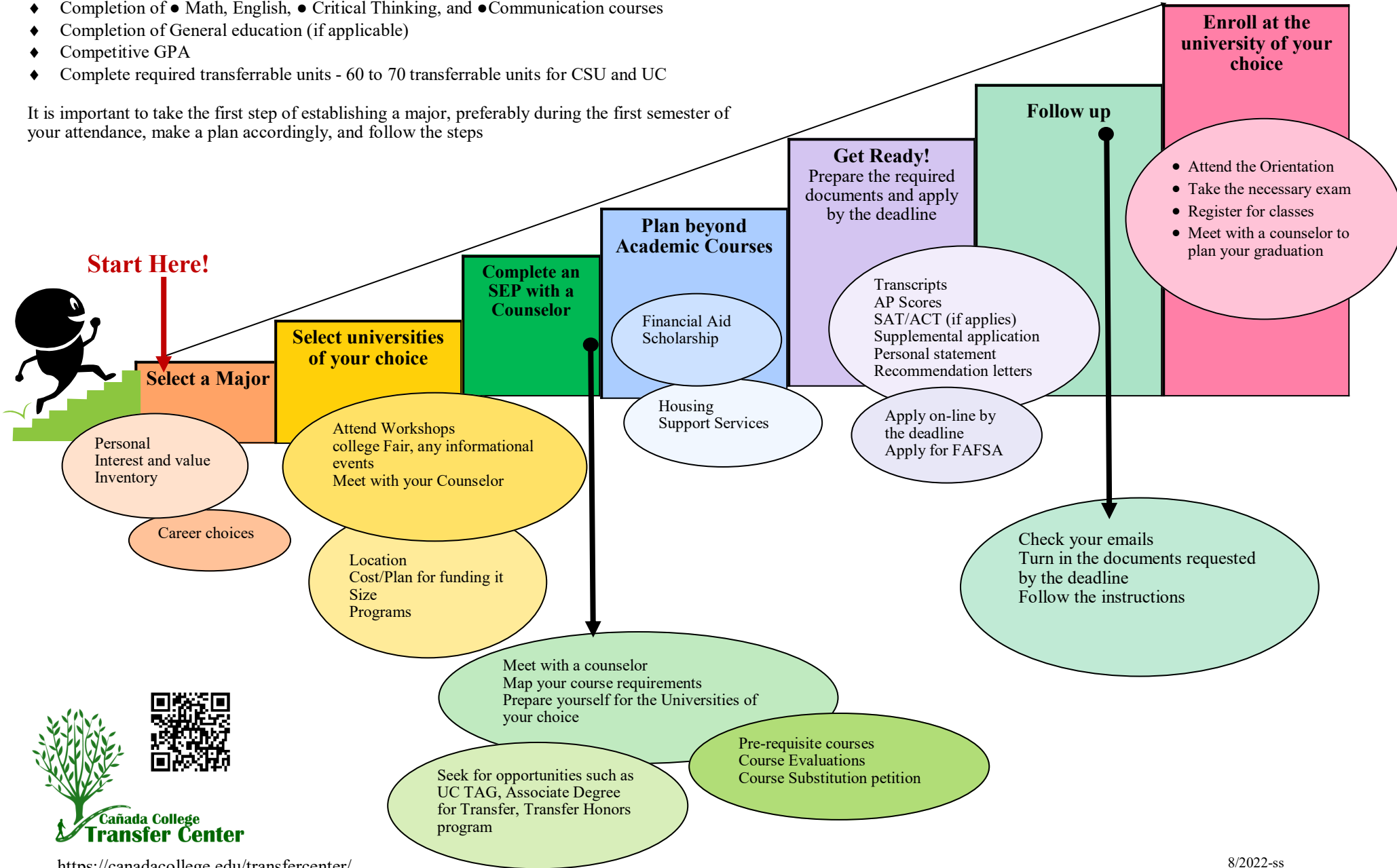


Transfer Plan

The universities' selection criteria is mainly based on:

- ◆ Completion of pre-requisite courses for a major
- ◆ Completion of ● Math, English, ● Critical Thinking, and ● Communication courses
- ◆ Completion of General education (if applicable)
- ◆ Competitive GPA
- ◆ Complete required transferrable units - 60 to 70 transferrable units for CSU and UC

It is important to take the first step of establishing a major, preferably during the first semester of your attendance, make a plan accordingly, and follow the steps



Canada College
Transfer Center

<https://canadacollege.edu/transfercenter/>